



**KDOHC**

**AUTOMATED  
FOOTWALL  
TREATMENT**

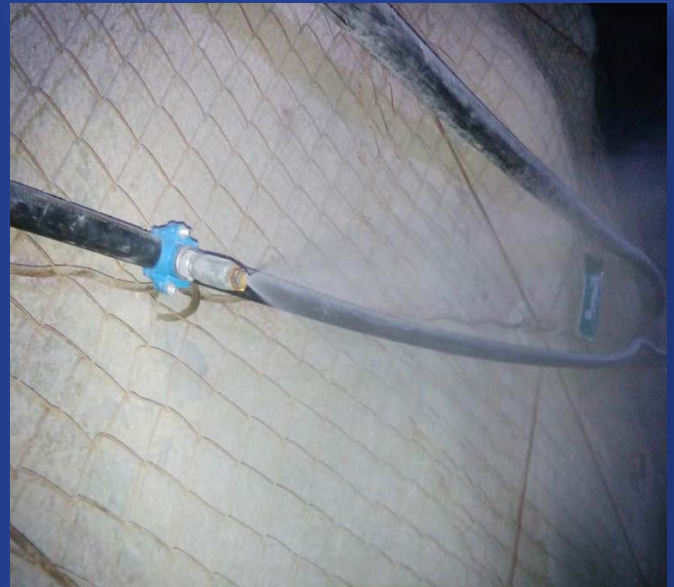
[WWW.KDOHC.CO.ZA](http://WWW.KDOHC.CO.ZA)



**DRY FOOTWALL**



**TREATED FOOTWALL**



**FOOTWALL TREATMENT SYSTEM IN OPERATION @ 16 BAR**



**COMPLETE PUMP STATION AND DOSING PLANT**



**DOSING PUMP**





210 LITER CHEMICAL TANK IN BUND WALL



AUTOMATED FOOTWALL TREATMENT SYSTEM IN OPERATION



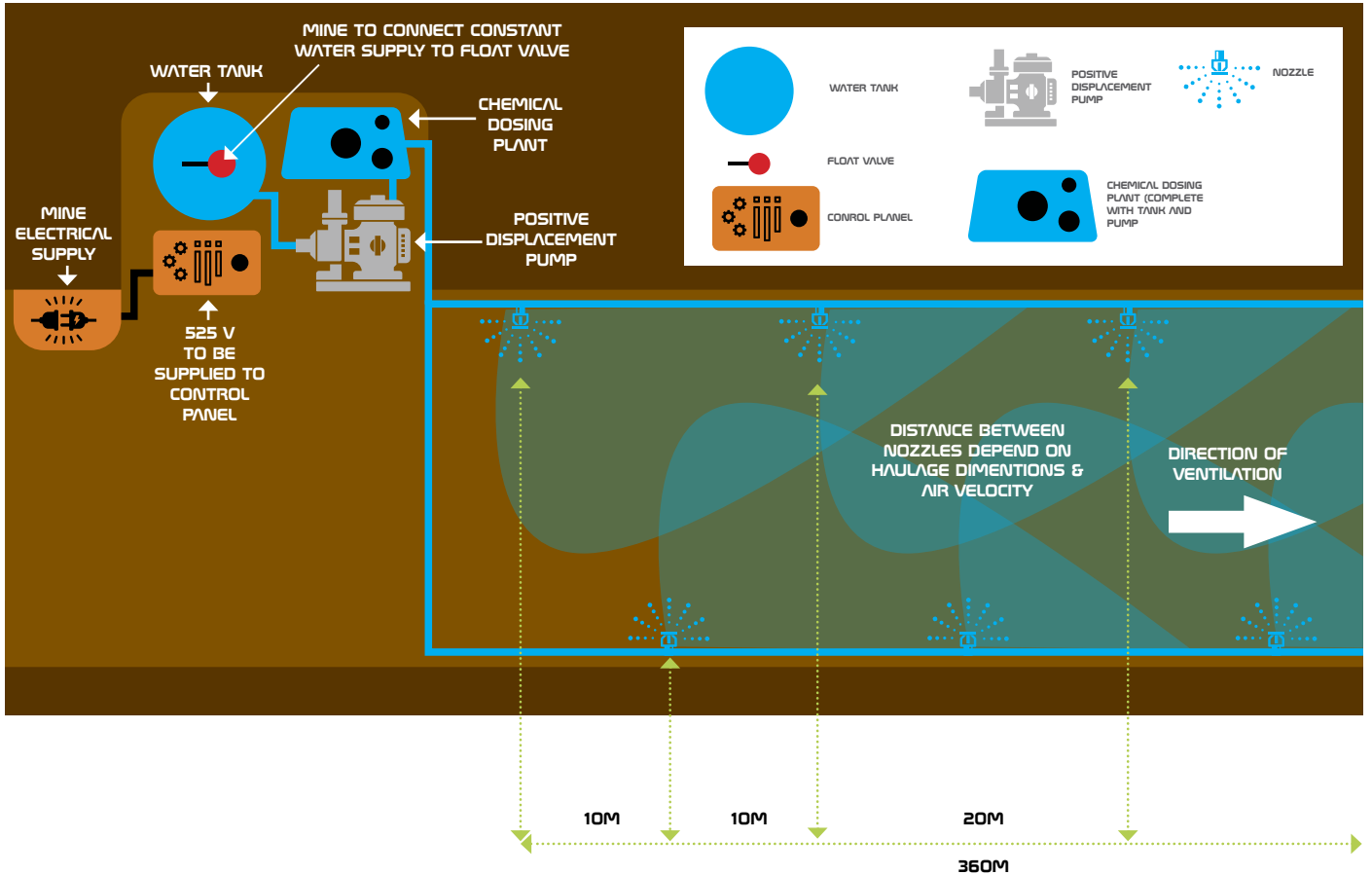
AUTOMATED FOOTWALL TREATMENT PANEL



WL 160 PUMP STATION



# AUTOMATED FOOTWALL TREATMENT SCHEMATIC



WL 3000 PUMP



WL 160 PUMP

Components	Description				Quantity
<b>Pump Station</b>					1
<b>Available in</b>	220V	380V	525V	1000V	
<b>Pump size</b>	WL 160		WL 3000		1
<b>Motor Size</b>	11kw		12kw		1
<b>Brands used</b>	WEG; ACTOM; SIEMENS; ELECTROMOTE				
<b>Maximum flow @ 20 bar</b>	180 L/min			242 L/min	
	80 Max			110 Max	
<b>Electrical Control Panel</b>					
<b>Activation types</b>	Programable timer				1
	Realtime aerosol monitor contact				1
	Interconnection contact (blasting contact)				1
	Remote start station				2
<b>Water Plant</b>					
	5000 Liter tank		2500 Liter tank		1
	Mechanical float valve (max 10Bar supply)				1
	Mechanical pressure reducer (reduce pressure by 10 Bar + water strainer for inlet water)				1
	10M float switch (dry run protection for pump)				1
	Pump inlet strainer				1
	Suction hose				1
	Teflon water plug				1
	Pratley 2 way termination box				1
	Milton Roy pump		Prominent beta 4 dosing pump		1
	210 Liter chemical tank				1
	Level switch				1
	Pratley 2 way box				1
<b>Plumbing</b>					
<b>HDPE PIPE</b>	CL 20 HDPE 40mm pipe				700m Max
<b>Piping</b>	2" Dynamische Hydraulic pipe (275 Bar)				30m max
<b>HDPE CL 16 Elbows</b>	1/2" NTP				10 Max
<b>HDPE CL 16 T-Pieces</b>	1/2" NTP				10 Max
<b>CL 20 Saddles</b>	40mm - 1/2" NTP				Pump dependent
<b>Check valves</b>	1/2" 16 bar cracking pressure				Pump dependent
<b>Consumables</b>					
	Cable ties				100
	S/S straping				





**KDOHC**

Contact: 082 442 7961 | [info@kdohc.co.za](mailto:info@kdohc.co.za)

Address: Wilgepark-Unit 7, c/o Piet Uys & Govan Mbeki Str, Potchefstroom, North West, 2531

Office: 082 442 7961 | [www.kdohc.co.za](http://www.kdohc.co.za)